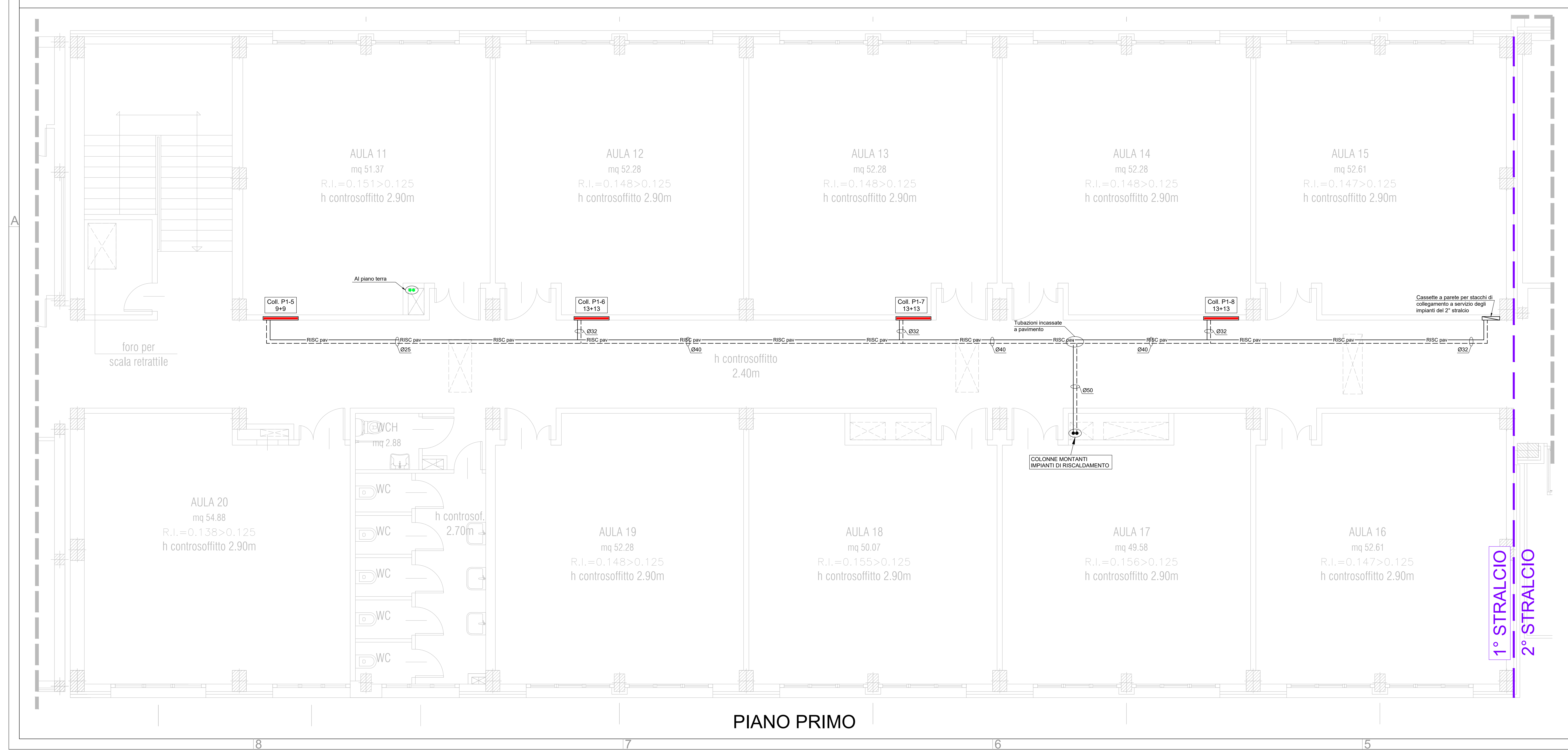
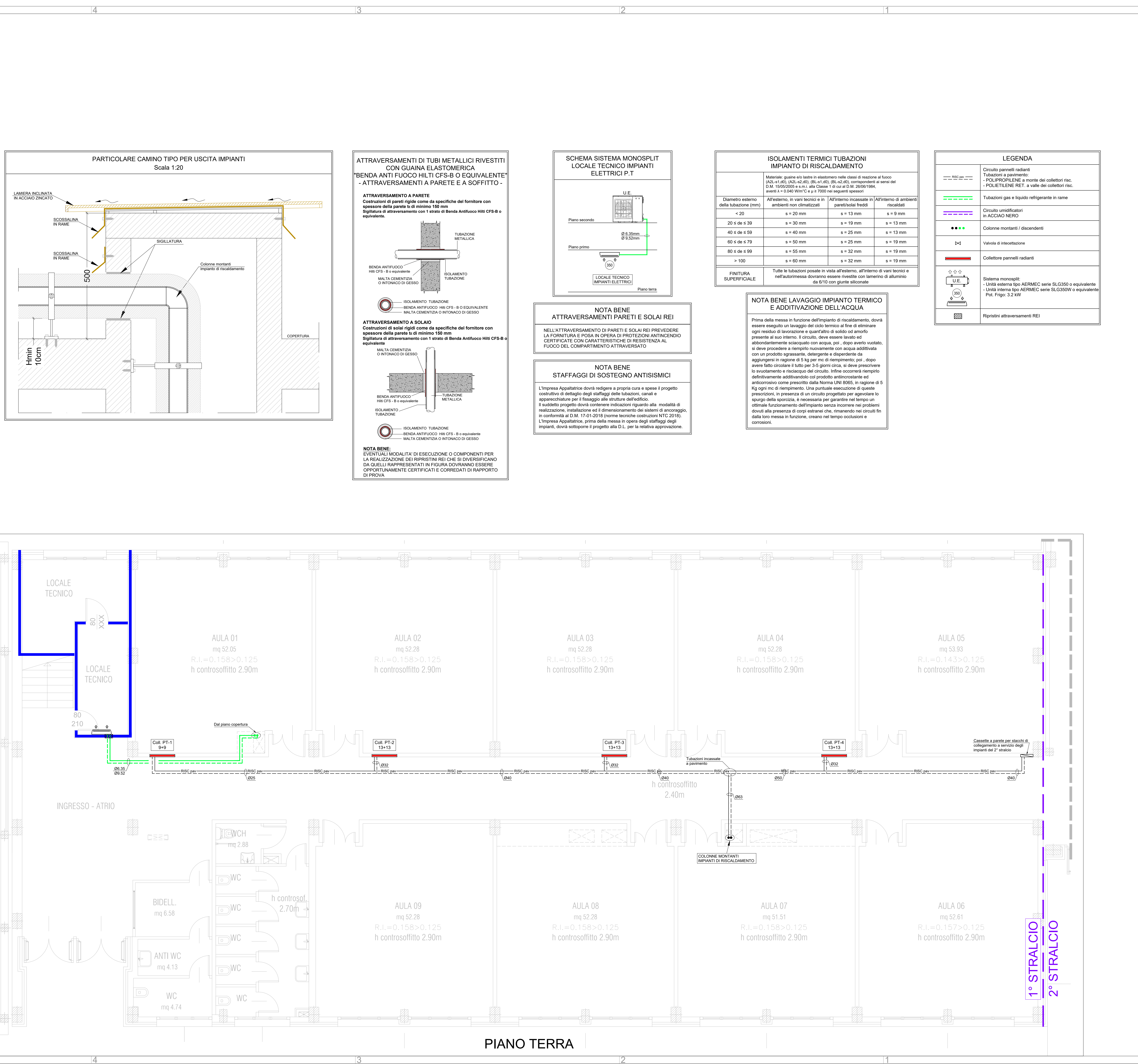


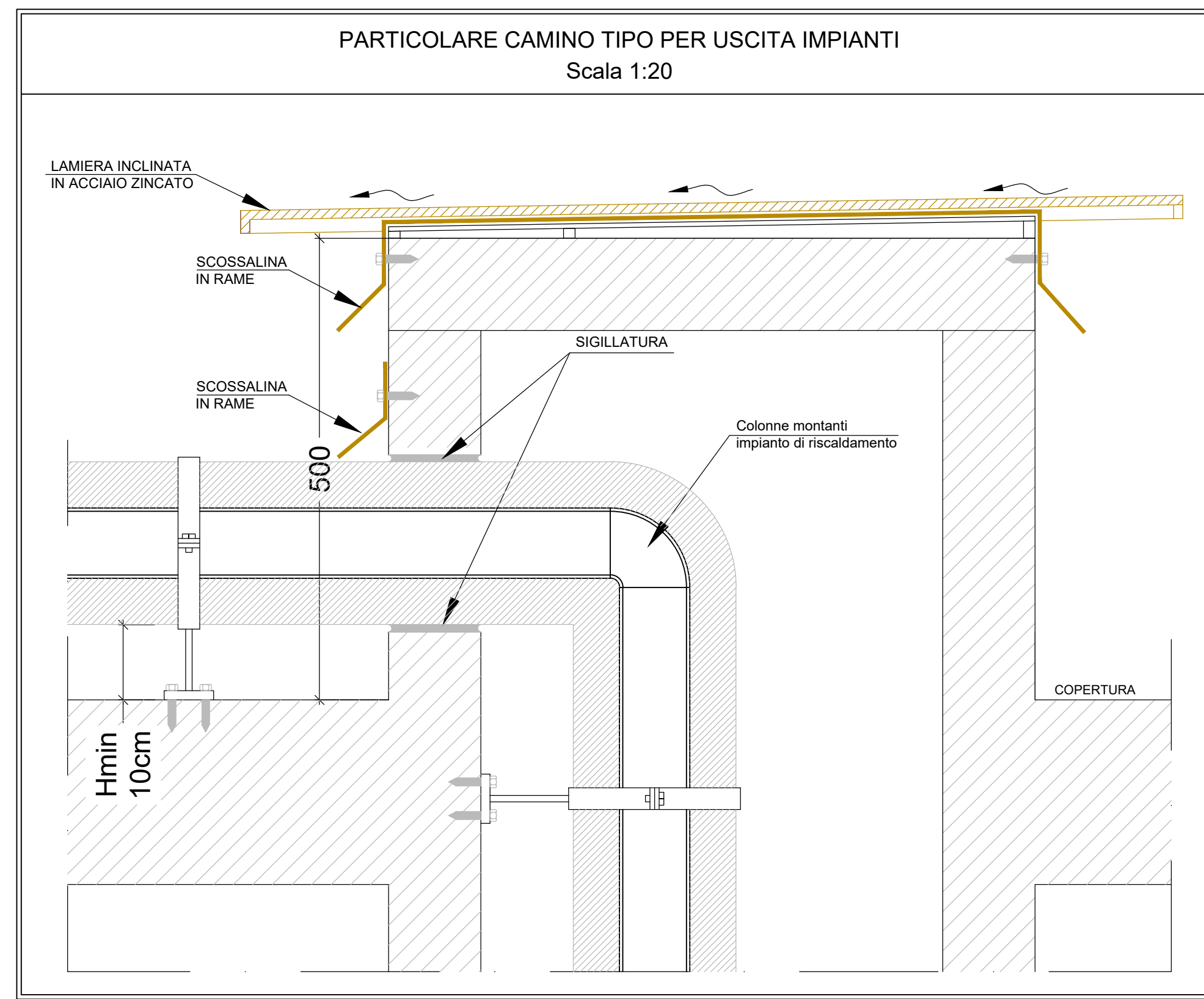
PIANO COPERTURA



PIANO PRIMO

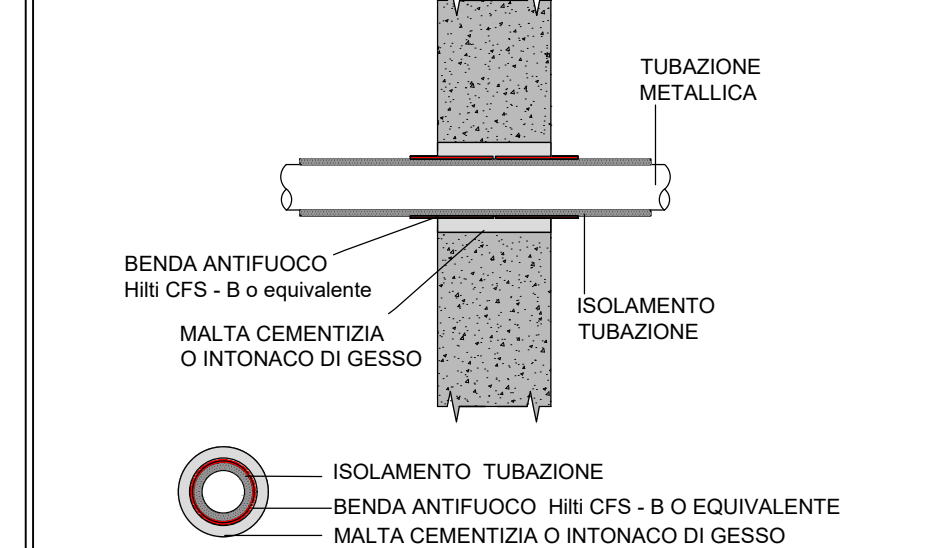


PIANO TERRA

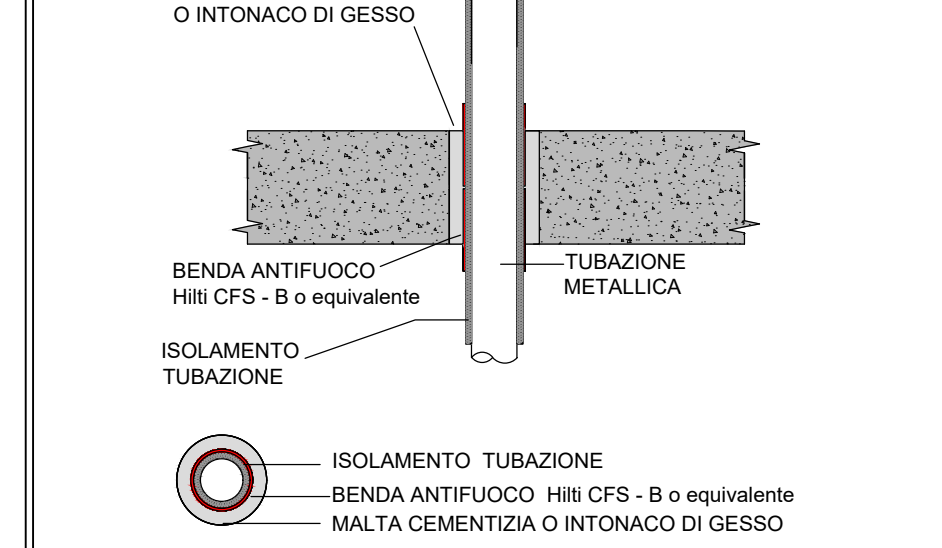


ATTRaversamenti di TUBI METALLICI RIVESTITI  
CON GUAINA ELASTOMERICA  
"BENDA ANTI FUOCO HILTI CFS-B O EQUIVALENTE"  
- ATTRAVERSAMENTI A PARETE E A SOFFITTO -

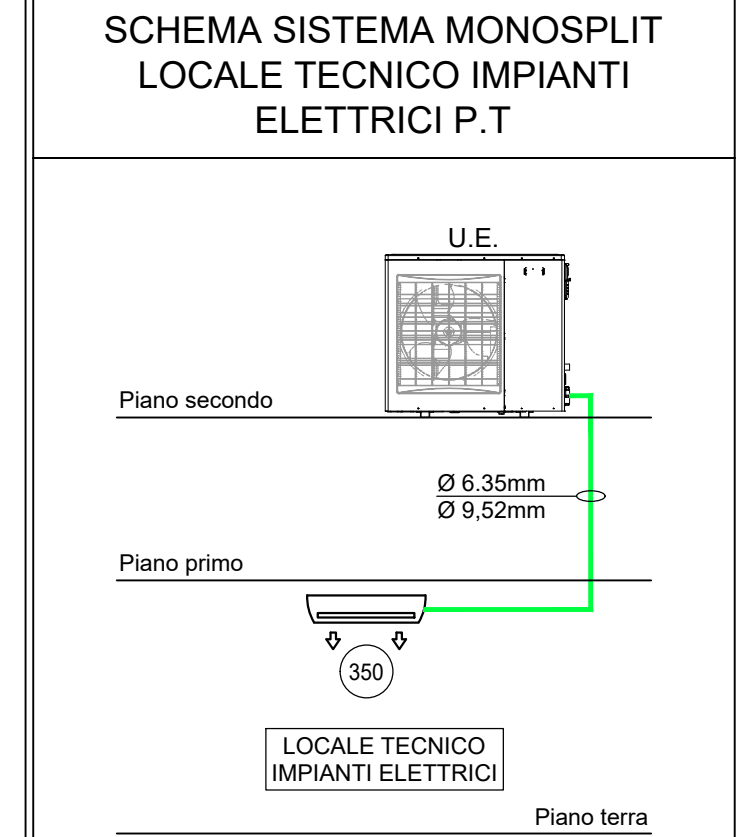
ATTRaversamento A PARETE  
Costruzioni di pareti rigide come da specifiche del fornitore con  
spessore della parete L di minimo 150 mm  
Sigillatura di attraversamento con 1 strato di Benda Antifuoco HILTI CFS-B o  
equivalente.



ATTRaversamento A SOFFITO  
Costruzioni di soletti rigidi come da specifiche del fornitore con  
spessore della parete L di minimo 150 mm  
Sigillatura di attraversamento con 1 strato di Benda Antifuoco HILTI CFS-B o  
equivalente.



NOTA BENE:  
EVENTUALI MODALITÀ DI ESECUZIONE O COMPONENTI PER  
LA REALIZZAZIONE DEI RIPRISTINI REI CHE SI DIVERSIFICANO  
DA QUELLI RAPPRESENTATI IN FIGURA DOVRANNO ESSERE  
OPPORTUNAMENTE CERTIFICATI E CORRELATI DI RAPPORTO  
DI PROVA



NOTA BENE  
ATTRAVERSAMENTI PARETI E SOLAI REI  
NELL'ATTRAVERSAMENTO DI PARETI E SOLAI REI PREVEDERE  
LA FORNITURA E POSA IN OPERA DI PROTEZIONI ANTINFUOCO  
CERTIFICATE CON CARATTERISTICHE DI RESISTENZA AL  
FUOCO DEL COMPARTIMENTO ATTRAVERSATO

NOTA BENE  
STAFFAGGI DI SOSTEGNO ANTISISMICI  
L'Impresa Appaltatrice dovrà redigere a propria cura e spese il progetto  
costruttivo di dettaglio degli staffaggi delle tubazioni, canali e  
apparecchiature per il fissaggio alle strutture dell'edificio.  
Il suddetto progetto dovrà contenere indicazioni riguardo alla modalità di  
realizzazione, installazione e all' dimensionamento dei sistemi di ancoraggio,  
in conformità al D.M. 17-01-2018 (norme tecniche costruttive NTC 2018).  
L'Impresa Appaltatrice, prima della messa in opera degli staffaggi degli  
impianti, dovrà sottoporre il progetto alla D.L. per la relativa approvazione.

ISOLAMENTI TERMICI TUBAZIONI IMPIANTO DI RISCALDAMENTO			
Materiale: guaina esp. isolante in elastomero nella classe di reazione al fuoco (A2L-s1, A2S1, A2S2, A2S3, B1-s1, B1-s2, B1-s3, B1-s4, B1-s5, B1-s6, B1-s7, B1-s8, B1-s9, B1-s10, B1-s11, B1-s12, B1-s13, B1-s14, B1-s15, B1-s16, B1-s17, B1-s18, B1-s19, B1-s20, B1-s21, B1-s22, B1-s23, B1-s24, B1-s25, B1-s26, B1-s27, B1-s28, B1-s29, B1-s30, B1-s31, B1-s32, B1-s33, B1-s34, B1-s35, B1-s36, B1-s37, B1-s38, B1-s39, B1-s40, B1-s41, B1-s42, B1-s43, B1-s44, B1-s45, B1-s46, B1-s47, B1-s48, B1-s49, B1-s50, B1-s51, B1-s52, B1-s53, B1-s54, B1-s55, B1-s56, B1-s57, B1-s58, B1-s59, B1-s60, B1-s61, B1-s62, B1-s63, B1-s64, B1-s65, B1-s66, B1-s67, B1-s68, B1-s69, B1-s70, B1-s71, B1-s72, B1-s73, B1-s74, B1-s75, B1-s76, B1-s77, B1-s78, B1-s79, B1-s80, B1-s81, B1-s82, B1-s83, B1-s84, B1-s85, B1-s86, B1-s87, B1-s88, B1-s89, B1-s90, B1-s91, B1-s92, B1-s93, B1-s94, B1-s95, B1-s96, B1-s97, B1-s98, B1-s99, B1-s100, B1-s101, B1-s102, B1-s103, B1-s104, B1-s105, B1-s106, B1-s107, B1-s108, B1-s109, B1-s110, B1-s111, B1-s112, B1-s113, B1-s114, B1-s115, B1-s116, B1-s117, B1-s118, B1-s119, B1-s120, B1-s121, B1-s122, B1-s123, B1-s124, B1-s125, B1-s126, B1-s127, B1-s128, B1-s129, B1-s130, B1-s131, B1-s132, B1-s133, B1-s134, B1-s135, B1-s136, B1-s137, B1-s138, B1-s139, B1-s140, B1-s141, B1-s142, B1-s143, B1-s144, B1-s145, B1-s146, B1-s147, B1-s148, B1-s149, B1-s150, B1-s151, B1-s152, B1-s153, B1-s154, B1-s155, B1-s156, B1-s157, B1-s158, B1-s159, B1-s160, B1-s161, B1-s162, B1-s163, B1-s164, B1-s165, B1-s166, B1-s167, B1-s168, B1-s169, B1-s170, B1-s171, B1-s172, B1-s173, B1-s174, B1-s175, B1-s176, B1-s177, B1-s178, B1-s179, B1-s180, B1-s181, B1-s182, B1-s183, B1-s184, B1-s185, B1-s186, B1-s187, B1-s188, B1-s189, B1-s190, B1-s191, B1-s192, B1-s193, B1-s194, B1-s195, B1-s196, B1-s197, B1-s198, B1-s199, B1-s200, B1-s201, B1-s202, B1-s203, B1-s204, B1-s205, B1-s206, B1-s207, B1-s208, B1-s209, B1-s210, B1-s211, B1-s212, B1-s213, B1-s214, B1-s215, B1-s216, B1-s217, B1-s218, B1-s219, B1-s220, B1-s221, B1-s222, B1-s223, B1-s224, B1-s225, B1-s226, B1-s227, B1-s228, B1-s229, B1-s230, B1-s231, B1-s232, B1-s233, B1-s234, B1-s235, B1-s236, B1-s237, B1-s238, B1-s239, B1-s240, B1-s241, B1-s242, B1-s243, B1-s244, B1-s245, B1-s246, B1-s247, B1-s248, B1-s249, B1-s250, B1-s251, B1-s252, B1-s253, B1-s254, B1-s255, B1-s256, B1-s257, B1-s258, B1-s259, B1-s260, B1-s261, B1-s262, B1-s263, B1-s264, B1-s265, B1-s266, B1-s267, B1-s268, B1-s269, B1-s270, B1-s271, B1-s272, B1-s273, B1-s274, B1-s275, B1-s276, B1-s277, B1-s278, B1-s279, B1-s280, B1-s281, B1-s282, B1-s283, B1-s284, B1-s285, B1-s286, B1-s287, B1-s288, B1-s289, B1-s290, B1-s291, B1-s292, B1-s293, B1-s294, B1-s295, B1-s296, B1-s297, B1-s298, B1-s299, B1-s300, B1-s301, B1-s302, B1-s303, B1-s304, B1-s305, B1-s306, B1-s307, B1-s308, B1-s309, B1-s310, B1-s311, B1-s312, B1-s313, B1-s314, B1-s315, B1-s316, B1-s317, B1-s318, B1-s319, B1-s320, B1-s321, B1-s322, B1-s323, B1-s324, B1-s325, B1-s326, B1-s327, B1-s328, B1-s329, B1-s330, B1-s331, B1-s332, B1-s333, B1-s334, B1-s335, B1-s336, B1-s337, B1-s338, B1-s339, B1-s340, B1-s341, B1-s342, B1-s343, B1-s344, B1-s345, B1-s346, B1-s347, B1-s348, B1-s349, B1-s350, B1-s351, B1-s352, B1-s353, B1-s354, B1-s355, B1-s356, B1-s357, B1-s358, B1-s359, B1-s360, B1-s361, B1-s362, B1-s363, B1-s364, B1-s365, B1-s366, B1-s367, B1-s368, B1-s369, B1-s370, B1-s371, B1-s372, B1-s373, B1-s374, B1-s375, B1-s376, B1-s377, B1-s378, B1-s379, B1-s380, B1-s381, B1-s382, B1-s383, B1-s384, B1-s385, B1-s386, B1-s387, B1-s388, B1-s389, B1-s390, B1-s391, B1-s392, B1-s393, B1-s394, B1-s395, B1-s396, B1-s397, B1-s398, B1-s399, B1-s400, B1-s401, B1-s402, B1-s403, B1-s404, B1-s405, B1-s406, B1-s407, B1-s408, B1-s409, B1-s410, B1-s411, B1-s412, B1-s413, B1-s414, B1-s415, B1-s416, B1-s417, B1-s418, B1-s419, B1-s420, B1-s421, B1-s422, B1-s423, B1-s424, B1-s425, B1-s426, B1-s427, B1-s428, B1-s429, B1-s430, B1-s431, B1-s432, B1-s433, B1-s434, B1-s435, B1-s436, B1-s437, B1-s438, B1-s439, B1-s440, B1-s441, B1-s442, B1-s443, B1-s444, B1-s445, B1-s446, B1-s447, B1-s448, B1-s449, B1-s450, B1-s451, B1-s452, B1-s453, B1-s454, B1-s455, B1-s456, B1-s457, B1-s458, B1-s459, B1-s460, B1-s461, B1-s462, B1-s463, B1-s464, B1-s465, B1-s466, B1-s467, B1-s468, B1-s469, B1-s470, B1-s471, B1-s472, B1-s473, B1-s474, B1-s475, B1-s476, B1-s477, B1-s478, B1-s479, B1-s480, B1-s481, B1-s482, B1-s483, B1-s484, B1-s485, B1-s486, B1-s487, B1-s488, B1-s489, B1-s490, B1-s491, B1-s492, B1-s493, B1-s494, B1-s495, B1-s496, B1-s497, B1-s498, B1-s499, B1-s500, B1-s501, B1-s502, B1-s503, B1-s504, B1-s505, B1-s506, B1-s507, B1-s508, B1-s509, B1-s510, B1-s511, B1-s512, B1-s513, B1-s514, B1-s515, B1-s516, B1-s517, B1-s518, B1-s519, B1-s520, B1-s521, B1-s522, B1-s523, B1-s524, B1-s525, B1-s526, B1-s527, B1-s528, B1-s529, B1-s530, B1-s531, B1-s532, B1-s533, B1-s534, B1-s535, B1-s536, B1-s537, B1-s538, B1-s539, B1-s540, B1-s541, B1-s542, B1-s543, B1-s544, B1-s545, B1-s546, B1-s547, B1-s548, B1-s549, B1-s550, B1-s551, B1-s552, B1-s553, B1-s554, B1-s555, B1-s556, B1-s557, B1-s558, B1-s559, B1-s560, B1-s561, B1-s562, B1-s563, B1-s564, B1-s565, B1-s566, B1-s567, B1-s568, B1-s569, B1-s570, B1-s571, B1-s572, B1-s573, B1-s574, B1-s575, B1-s576, B1-s577, B1-s578, B1-s579, B1-s580, B1-s581, B1-s582, B1-s583, B1-s584, B1-s585, B1-s586, B1-s587, B1-s588, B1-s589, B1-s590, B1-s591, B1-s592, B1-s593, B1-s594, B1-s595, B1-s596, B1-s597, B1-s598, B1-s599, B1-s600, B1-s601, B1-s602, B1-s603, B1-s604, B1-s605, B1-s606, B1-s607, B1-s608, B1-s609, B1-s610, B1-s611, B1-s612, B1-s613, B1-s614, B1-s615, B1-s616, B1-s617, B1-s618, B1-s619, B1-s620, B1-s621, B1-s622, B1-s623, B1-s624, B1-s625, B1-s626, B1-s627, B1-s628, B1-s629, B1-s630, B1-s631, B1-s632, B1-s633, B1-s634, B1-s635, B1-s636, B1-s637, B1-s638, B1-s639, B1-s640, B1-s641, B1-s642, B1-s643, B1-s644, B1-s645, B1-s646, B1-s647, B1-s648, B1-s649, B1-s650, B1-s651, B1-s652, B1-s653, B1-s654, B1-s655, B1-s656, B1-s657, B1-s658, B1-s659, B1-s660, B1-s661, B1-s662, B1-s663, B1-s664, B1-s665, B1-s666, B1-s667, B1-s668, B1-s669, B1-s670, B1-s671, B1-s672, B1-s673, B1-s674, B1-s675, B1-s676, B1-s677, B1-s678, B1-s679, B1-s680, B1-s681, B1-s682, B1-s683, B1-s684, B1-s685, B1-s686, B1-s687, B1-s688, B1-s689, B1-s690, B1-s691, B1-s692, B1-s693, B1-s694, B1-s695, B1-s696, B1-s697, B1-s698, B1-s699, B1-s700, B1-s701, B1-s702, B1-s703, B1-s704, B1-s705, B1-s706, B1-s707, B1-s708, B1-s709, B1-s710, B1-s711, B1-s712, B1-s713, B1-s714, B1-s715, B1-s716, B1-s717, B1-s718, B1-s719, B1-s720, B1-s721, B1-s722, B1-s723, B1-s724, B1-s725, B1-s726, B1-s727, B1-s728, B1-s729, B1-s730, B1-s731, B1-s732, B1-s733, B1-s734, B1-s735, B1-s736, B1-s737, B1-s738, B1-s739, B1-s740, B1-s741, B1-s742, B1-s743, B1-s744, B1-s745, B1-s746, B1-s747, B1-s748, B1-s749, B1-s750, B1-s751, B1-s752, B1-s753, B1-s754, B1-s755, B1-s756, B1-s757, B1-s758, B1-s759, B1-s760, B1-s761, B1-s762, B1-s763, B1-s764, B1-s765, B1-s766, B1-s767, B1-s768, B1-s769, B1-s770, B1-s771, B1-s772, B1-s773, B1-s774, B1-s775, B1-s776, B1-s777, B1-s778, B1-s779, B1-s780, B1-s781, B1-s782, B1-s783, B1-s784, B1-s785, B1-s786, B1-s787, B1-s788, B1-s789, B1-s790, B1-s791, B1-s792, B1-s793, B1-s794, B1-s795, B1-s796, B1-s797, B1-s798, B1-s799, B1-s800, B1-s801, B1-s802, B1-s803, B1-s804, B1-s805, B1-s806, B1-s807, B1-s808, B1-s809, B1-s810, B1-s811, B1-s812, B1-s813, B1-s814, B1-s815, B1-s816, B1-s817, B1-s818, B1-s819, B1-s820, B1-s821, B1-s822, B1-s823, B1-s824, B1-s825, B1-s826, B1-s827, B1-s828, B1-s829, B1-s830, B1-s831, B1-s832, B1-s833, B1-s834, B1-s835, B1-s836, B1-s837, B1-s838, B1-s839, B1-s840, B1-s841, B1-s842, B1-s843, B1-s844, B1-s845, B1-s846, B1-s847, B1-s848, B1-s849, B1-s850, B1-s851, B1-s852, B1-s853, B1-s854, B1-s855, B1-s856, B1-s857, B1-s858, B1-s859, B1-s860, B1-s861, B1-s862, B1-s863, B1-s864, B1-s865, B1-s866, B1-s867, B1-s868, B1-s869, B1-s870, B1-s871, B1-s872, B1-s873, B1-s874, B1-s875, B1-s876, B1-s877, B1-s878, B1-s879, B1-s880, B1-s881, B1-s882, B1-s883, B1-s884, B1-s885, B1-s886, B1-s887, B1-s888, B1-s889, B1-s890, B1-s891, B1-s892, B1-s893, B1-s894, B1-s895, B1-s896, B1-s897, B1-s898, B1-s899, B1-s900, B1-s901, B1-s902, B1-s903, B1-s904, B1-s905, B1-s906, B1-s907, B1-s908, B1-s909, B1-s910, B1-s911, B1-s912, B1-s913, B1-s914, B1-s915, B1-s916, B1-s917, B1-s918, B1-s919, B1-s920, B1-s921, B1-s922, B1-s923, B1-s924, B1-s925, B1-s926, B1-s927, B1-s928, B1-s929, B1-s930, B1-s931, B1-s932, B1-s933, B1-s934, B1-s935, B1-s936, B1-s937, B1-s938, B1-s939, B1-s940, B1-s941, B1-s942, B1-s943, B1-s944, B1-s945, B1-s946, B1-s947, B1-s948, B1-s949, B1-s950, B1-s951, B1-s952, B1-s953, B1-s954, B1-s955, B1-s956, B1-s957, B1-s958, B1-s959, B1-s960, B1-s961, B1-s962, B1-s963, B1-s964, B1-s965, B1-s966, B1-s967, B1-s968, B1-s969, B1-s970, B1-s971, B1-s972, B1-s973, B1-s974, B1-s975, B1-s976, B1-s977, B1-s978, B1-s979, B1-s980, B1-s981, B1-s982, B1-s983, B1-s984, B1-s985, B1-s986, B1-s987, B1-s988, B1-s989, B1-s990, B1-s991, B1-s992, B1-s993, B1-s994, B1-s995, B1-s996, B1-s997, B1-s998, B1-s999, B1-s1000, B1-s1001, B1-s1002, B1-s1003, B1-s1004, B1-s1005, B1-s1006, B1-s1007, B1-s1008, B1-s1009, B1-s1010, B1-s1011, B1-s1012, B1-s1013, B1-s1014, B1-s1015, B1-s1016, B1-s1017, B1-s1018, B1-s1019, B1-s1020, B1-s1021, B1-s1022, B1-s1023, B1-s1024, B1-s1025, B1-s1026, B1-s1027, B1-s1028, B1-s1029, B1-s1030, B1-s1031, B1-s1032, B1-s1033, B1-s1034, B1-s1035, B1-s1036, B1-s1037, B1-s1038, B1-s1039, B1-s1040, B1-s1041, B1-s1042, B1-s1043, B1-s1044, B1-s1045, B1-s1046, B1-s1047, B1-s1048, B1-s1049, B1-s1050, B1-s1051, B1-s1052, B1-s1053, B1-s1054, B1-s1055, B1-s1056, B1-s1057, B1-s1058, B1-s1059, B1-s1060, B1-s1061, B1-s1062, B1-s1063, B1-s1064, B1-s1065, B1-s1066, B1-s1067, B1-s1068, B1-s1069, B1-s1070, B1-s1071, B1-s1072, B1-s1073, B1-s1074, B1-s1075, B1-s1076, B1-s1077, B1-s1078, B1-s1079, B1-s1080, B1-s1081, B1-s1082, B1-s1083, B1-s1084, B1-s1085, B1-s1086, B1-s1087, B1-s1088, B1-s1089, B1-s1090, B1-s1091, B1-s1092, B1-s1093, B1-s1094, B1-s1095, B1-s1096, B1-s1097, B1-s1098, B1-s1099, B1-s1100, B1-s1101, B1-s1102, B1-s1103, B1-s1104, B1-s1105, B1-s1106, B1-s1107, B1-s1108, B1-s1109, B1-s1110, B1-s1111, B1-s1112, B1-s1113, B1-s1114, B1-s1115, B1-s1116, B1-s1117, B1-s1118, B1-s1119, B1-s1120, B1-s1121, B1-s1122, B1-s1123, B1-s1124, B1-s1125, B1-s1126, B1-s1127, B1-s1128, B1-s1129, B1-s1130, B1-s1131, B1-s1132, B1-s1133, B1-s1134, B1-s1135, B1-s1136, B1-s1137, B1-s1138, B1-s1139, B1-s1140, B1-s1141, B1-s1142, B1-s1143, B1-s1144, B1-s1145, B1-s1146, B1-s1147, B1-s1148, B1-s1149, B1-s1150, B1-s1151, B1-s1152, B1-s1153, B1-s1154, B1-s1155, B1-s1156, B1-s1157, B1-s1158, B1-s1159, B1-s1160, B1-s1161, B1-s1162, B1-s1163, B1-s1164, B1-s1165, B1-s1166, B1-s1167, B1-s1168, B1-s1169, B1-s1170, B1-s1171, B1-s1172, B1-s1173, B1-s1174, B1-s1175, B1-s1176, B1-s1177, B1-s1178, B1-s1179, B1-s1180, B1-s1181, B1-s1182, B1-s1183, B1-s1184, B1-s1185, B1-s1186, B1-s1187, B1-s1188, B1-s1189, B1-s1190, B1-s1191, B1-s1192, B1-s1193, B1-s1194, B1-s1195, B1-s1196, B1-s1197, B1-s1198, B1-s1199, B1-s1200, B1-s1201, B1-s1202, B1-s1203, B1-s1204, B1-s1205, B1-s1206, B1-s1207, B1-s1208, B1-s1209, B1-s1210, B1-s1211, B1-s1212, B1-s1213, B1-s1214, B1-s1215, B1-s1216, B1-s1217, B1-s1218, B1-s1219, B1-s1220, B1-s1221, B1-s1222, B1-s1223, B1-s1224, B1-s1225, B1-s1226, B1-s1227, B1-s1228, B1-s1229, B1-s1230, B1-s1231, B1-s1232, B1-s1233, B1-s1234, B1-s1235, B1-s1236, B1-s1237, B1-s1238, B1-s1239, B1-s1240, B1-s1241, B1-s1242, B1-s1243, B1-s1244, B1-s1245, B1-s1246, B1-s1247, B1-s1248, B1-s1249, B1-s1250, B1-s1251, B1-s1252, B1-s1253, B1-s1254, B1-s1255, B1-s1256, B1-s1257, B1-s1258, B1-s1259, B1-s1260, B1-s1261, B1-s1262, B1-s1263, B1-s1264, B1-s1265, B1-s1266, B1-s1267, B1-s1268, B1-s1269, B1-s1270, B1-s1271, B1-s1272, B1-s1273, B1-s1274, B1-s1275, B1-s1276, B1-s1277, B1-s1278, B1-s1279, B1-s1280, B1-s1281, B1-s1282, B1-s1283, B1-s1284, B1-s1285, B1-s1286, B1-s1287, B1-s1288, B1-s1289, B1-s1290, B1-s1291, B1-s1292, B1-s1293, B1-s1294, B1-s1295, B1-s1296, B1-s1297, B1-s1298, B1-s1299, B1-s1300, B1-s1301, B1-s1302, B1-s1303, B1-s1304, B1-s1305, B1-s1306, B1-s1307, B1-s1308, B1-s1309, B1-s1310, B1-s1311, B1-s1312, B1-s1313, B1-s1314, B1-s1315, B1-s1316, B1-s1317, B1-s1318, B1-s1319, B1-s1320, B1-s1321, B1-s1322, B1-s1323, B1-s1324, B1-s1325, B1-s1326, B1-s1327, B1-s1328, B1-s1329, B1-s1330, B1-s1331, B1-s1332, B1-s1333, B1-s1334, B1-s1335, B1-s1336, B1-s1337, B1-s1338, B1-s1339, B1-s1340, B1-s1341, B1-s1342, B1-s1343, B1-s1344, B1-s1345, B1-s1346, B1-s1347, B1-s1348, B1-s1349, B1-s1350, B1-s1351, B1-s1352, B1-s1353, B1-s1354, B1-s1355, B1-s1356, B1-s1357, B1-s1358, B1-s1359, B1-s1360, B1-s1361, B1-s1362, B1-s1363, B1-s1364, B1-s1365, B1-s1366, B1-s1367, B1-s1368, B1-s1369, B1-s1370, B1-s1371, B1-s1372, B1-s1373, B1-s1374, B1-s1375, B1-s1376, B1-s1377, B1-s1378, B1-s1379, B1-s1380, B1-s1381, B1-s1382, B1-s1383, B1-s1384, B1-s1385, B1-s1386, B1-s1387, B1-s1388, B1-s1389, B1-s1390, B1-s1391, B1-s1392, B1-s1393, B1-s1394, B1-s1395, B1-s1396, B1-s1397, B1-s1398, B1-s1399, B1-s1400, B1-s1401, B1-s1402, B1-s1403, B1-s1404, B1-s1405, B1-s1406, B1-s1407, B1-s1408, B1-s1409, B1-s1410, B1-s1411, B1-s1412, B1-s1413, B1-s1414, B1-s1415, B1-s1416, B1-s1417, B1-s1418, B1-s1419, B1-s1420, B1-s1421, B1-s1422, B1-s1423, B1-s1424, B1-s1425, B1-s1426, B1-s1427, B1-s1428, B1-s1429, B1-s1430, B1-s1431, B1-s1432, B1-s1433, B1-s1434, B1-s1435, B1-s1436, B1-s1437, B1-s1438, B1-s1439, B1-s1440, B1-s1441, B1-s1442, B1-s1443, B1-s1444, B1-s1445, B1-s1446, B1-s1447, B1-s1448, B1-s1449, B1-s1450, B1-s1451, B1-s1452, B1-s1453, B1-s1454, B1-s1455, B1-s1456, B1-s1457, B1-s1458, B1-s1459, B1-s1460, B1-s1461, B1-s1462, B1-s1463, B1-s1464, B1-s1465, B1-s1466, B1-s1467, B1-s1468, B1-s1469, B1-s1470, B1-s1471, B1-s1472, B1-s1473, B1-s1474, B1-s1475, B1-s1476, B1-s1477, B1-s1478, B1-s1479, B1-s1480, B1-s1481, B1-s1482, B1-s1483, B1-s1484, B1-s1485, B1-s1486, B1-s1487, B1-s1488, B1-s1489, B1-s1490, B1-s1491, B1-s1492, B1-s1493, B1-s1494, B1-s1495, B1-s1496, B1-s1497, B1-s1498, B1-s1499, B1-s1500, B1-s1501, B1-s1502, B1-s1503, B1-s1504, B1-s1505, B1-s1506, B1-s1507, B1-s1508, B1-s1509, B1-s1510, B1-s1511, B1-s1512, B1-s1513, B1-s1514, B1-s1515, B1-s1516, B1-s1517, B1-s1518, B1-s1519, B1-s1520, B1-s1521, B1-s1522, B1-s1523, B1-s1524, B1-s1525, B1-s1526, B1-s1527, B1-s1528, B1-s1529, B1-s1530, B1-s1531, B1-s1532, B1-s1533, B1-s1534, B1-s1535, B1-s1536, B1-s1537, B1-s1538, B1-s1539, B1-s1540, B1-s1541, B1-s1542, B1-s1543, B1-s1544, B1-s1545, B1-s1546, B1-s1547, B1-s1548, B1-s1549, B1-s1550, B1-s1551, B1-s1552, B1-s1553, B1-s1554, B1-s1555, B1-s1556, B1-s1557, B1-s1558, B1-s1559, B1-s1560, B1-s1561, B1-s1562, B1-s1563, B1-s1564, B1-s1565, B1-s1566, B1-s1567, B1-s1568, B1-s1569, B1-s1570, B1-s1571, B1-s1572, B1-s1573, B1-s1574, B1-s1575, B1-s1576, B1-s1577, B1-s1578, B1-s1579, B1-s1580, B1-s1581, B1-s1582, B1-s1583, B1-s1584, B1-s1585, B1-s1586, B1-s1587, B1-s1588, B1-s1589, B1-s1590, B1-s1591, B1-s1592, B1-s1593, B1-s1594, B1-s1595, B1-s1596, B1-s1597, B1-s1598, B1-s1599, B1-s1600, B1-s1601, B1-s1602, B1-s1603, B1-s1604, B1-s1605, B1-s1606, B1-s1607, B1-s1608, B1-s1609, B1-s1610, B1-s1611, B1-s1612, B1-s1613, B1-s1614, B1-s1615, B1-s1616, B1-s1617, B1-s1618, B1-s1619, B1-s1620, B1-s1621, B1-s1622, B1-s1623, B1-s1624, B1-s1625, B1-s1626, B1-s1627, B1-s1628, B1-s1629, B1-s1630, B1-s1631, B1-s1632, B1-s1633, B1-s1634, B1-s1635, B1-s1636, B1-s1637, B1-s1638, B1-s1639, B1-s1640, B1-s1641, B1-s1642, B1-s1643, B1-s1644, B1-s1645, B1-s1646, B1-s1647, B1-s1648, B1-s1649, B1-s1650, B1-s1651, B1-s1652, B1-s1653, B1-s1654, B1-s1655, B1-s1656, B1-s1657, B1-s1658, B1-s1659, B1-s1660, B1-s1661, B1-s1662, B1-s1663, B1-s1664, B1-s1665, B1-s1666, B1-s1667, B1-s1668, B1-s1669, B1-s1670, B1-s1671, B1-s1672, B1-s1673, B1-s1674, B1-s1675, B1-s167			